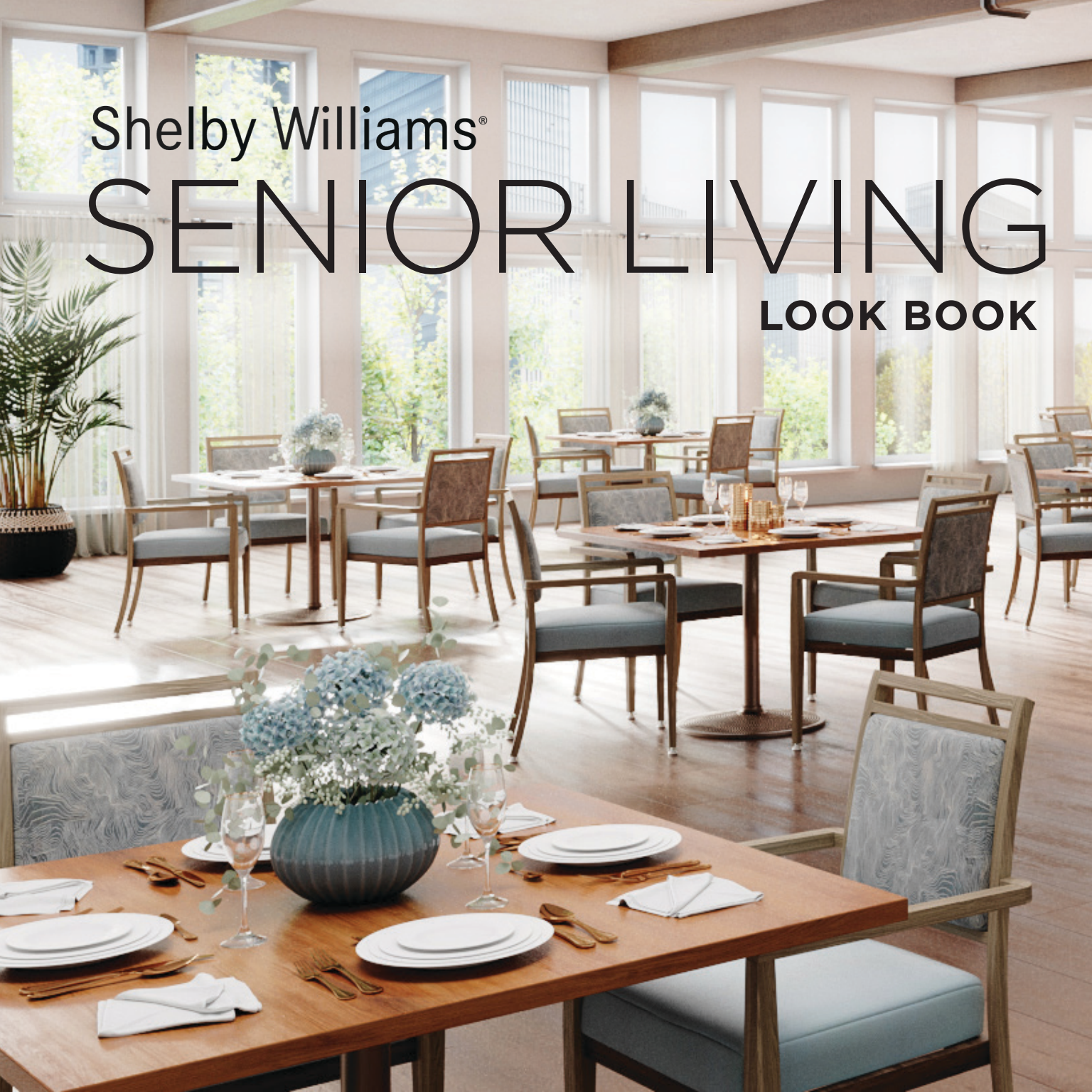


Shelby Williams®

SENIOR LIVING

LOOK BOOK



The Best Tables for Senior Living

Provide a beautiful space for seniors using tables that are durable and easy to clean.

- Table surfaces in senior living facilities should be made from durable materials that can withstand wear and tear. While wood is a popular choice, solid surface or laminate tables are a great option, as they are easy to clean and maintain.
- Table bases should be heavy with the weight centered toward the bottom, creating a low center of gravity so the tables do not tip. Self-leveling glides may be added to most base styles.

B12 Series Multipurpose Table

9201-1 Tufgrain
Stacking Armchair







6031 Table Top

J11 Series

9515-1 Tufgrain
Armchair

Table Base Styles



B53 Series



B62 Series



7700 Series



B78 Series

On the Cover



B48 Series Multipurpose Table



9202-1 Aluminum Stacking Armchair

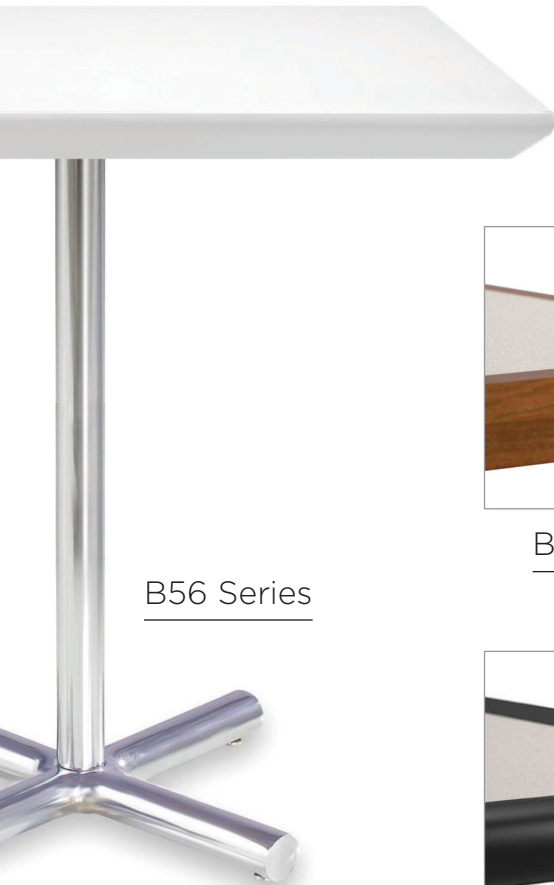




Table Top Styles

Wood & Urethane Edges

Soft on the arms while also allowing for a high contrast between the edge of the table and the center of the table making it easier for seniors with impaired vision to see the edge of the table.



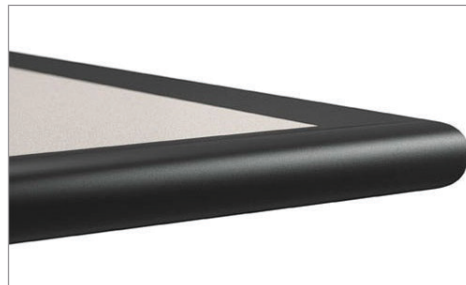
B56 Series



BEWE Wood Edge Top



WBND Wood Edge Top



No Spill Polyurethane Edge



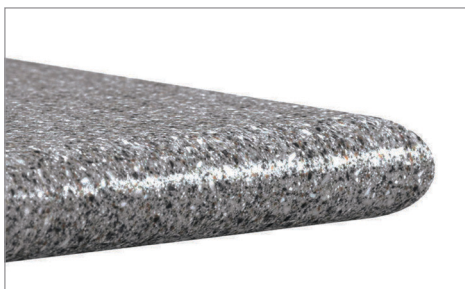
Faux Wood Grain
Polyurethane Edge

Premium Tops

Our Corian Solid Surface and SurfCor table tops are non-porous with a smooth, seamless appearance. With proper care and maintenance, they will not promote the growth of mildew, bacteria, or mold.



SurfCor Solid Surface



Corian

Quartz tops are superior to natural stone as they offer predictable color and never need to be sealed.



Quartz



Solid Plank



Thinscape Tops

Thinscape tops are a manufactured solid surface material that has an ultra-thin profile, is incredibly strong yet lightweight, and is easy to maintain. It is also eco-friendly, meeting GreenGuard Gold Certification's strict chemical emission limits.



ADA Compliance

Tables must allow for:

- Height of 28 to 34 inches with 27 inches of underside clearance
- Knee clearance of 19 inches
- Width of 30 inches
- 60 inches from the wall to the front of knee clearance



Left

80ST ADA Table

9001 Tufgrain
Stacking Café Chair

Right

ADAJ87 ADA Table

9002 Tufgrain
Stacking Café Chair

Click here to
download our
easy to follow
ADA Compliance
infographic.

Shelby Williams®

ShelbyWilliams.com

N50 Multipurpose Table

9880-1 Aluminum Arm Chair

Chelsea Booth

