

Shelby Williams®

Glide Guide

Table Bases



Model No.
RCT2
Thread: 1/4-20

For Use With
Table base glides,
best for carpet

Description
Rubber Cushion Glide



Model No.
MPT1
Thread: 1/4-20

For Use With
All surface glide
for cast iron table
bases

Description
Molded Plastic
Glide



Model No.
SLG4
Thread: 1/4-20

For Use With
All surface glide
for cast iron table
bases

Description
Super Leveler Glide



Model No.
236-581
Thread: 5/16-18

For Use With
All surface glide
for fully welded
steel table bases

Description
Molded Plastic
Glide

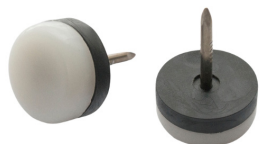


Model No.
ASG
Thread: 5/16-18

For Use With
All surface glides
for fully welded
steel bases

Description
Automatic Stabilizing
Glides

Wood Chairs



Model No.
81-4161

For Use With
All surface glides
for wood chairs

Description
7/8" Nylon
Rubber Cushion
Glide



Model No.
81-4176

For Use With
All surface glides
for wood chairs

Description
7/8" Domed Tack
Beige Glide For
wood Chairs

Shelby Williams®

Glide Guide



Model No.
236-760

For Use With
Carpet glides for
wood chairs

Description
7/8" Nickel Rubber
Cushion Glide

Banquet Chairs



Model No.
236-677

For Use With
All surface glide for
steel banquet chairs

Description
Nylon swivel glides
with dual Perma-Lock
umbrella clips



Model No.
236-678

For Use With
Carpet glide for
use with steel
banquet chairs

Description
Nickel plated swivel
glides with dual Perma-
Lock umbrella clips



Model No.
81-42171

For Use With
All surface glide for
use with 8100 Series
banquet chairs

Description
Nylon swivel glides
with dual Perma-Lock
umbrella clips



Model No.
81-4222

For Use With
9620 & 9621
banquet chairs

Description
Nickel swivel
glides

For products not mentioned in this guide, please confirm the correct glide type/part number with customer service.