

## WHY BOOTHS?

### DESIGNERS

Designers customize booths to communicate a unique point of view.



Wall benches can be used as flexible space that can adjust for group size.



Booths divide space to create multiple zones, each with a specific purpose.



Large surface areas allow designers many color and texture possibilities.

### GUESTS

Booths encourage social interactions, yet allow privacy.



USB or 15 amp power options allow users to work, unwind, or recharge while in the space.



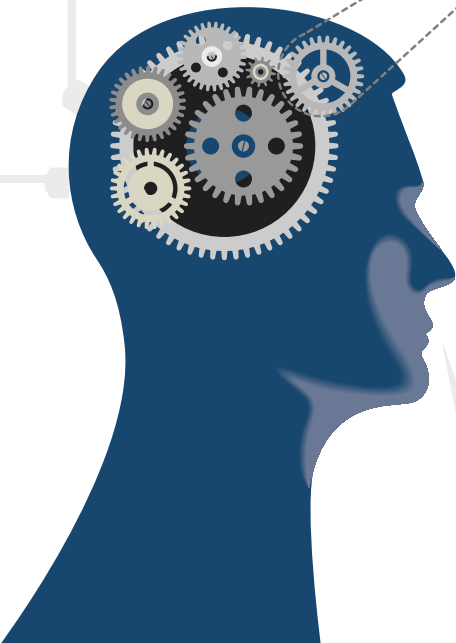
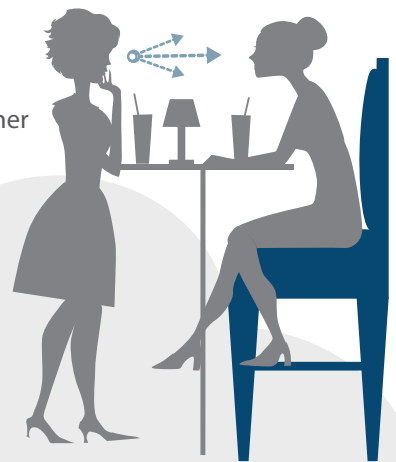
#### Booths are:

- ✓ Comfortable and safe.
- ✓ Private and quiet.
- ✓ Flexible space to work, relax, or chat with friends



#### Counter and Bar Height:

- ✓ Varying heights create visual interest
- ✓ Provides people standing and sitting with common eye level for communication
- ✓ Easier Access
- ✓ On trend, many users prefer higher seat heights



### OWNERS

- ✓ Booths can turn a simple space into a spectacular space
- ✓ Booths can be used anywhere, lobby, lounge, or dining



## Why Booths?

#### Guests prefer booths:

- ✓ Comfort
- ✓ Privacy
- ✓ Visual interest
- ✓ Quiet

#### Owners prefer booths:

- ✓ To maximize use of space
- ✓ People stay longer and spend more when in a booth
- ✓ Cost effective
- ✓ Low maintenance

#### Designers prefer booths:

- ✓ They allow maximum creativity
- ✓ Easily customized to meet any design requirement
- ✓ Interesting sight lines
- ✓ Create a unique design signature

LET US HELP YOU!

Visit [shelbywilliams.com](http://shelbywilliams.com) | 1-800-873-3252