

Making the Case for Lightweight Banquet Chairs

WE ARE OFTEN ASKED WHY ALUMINUM VS. STEEL?



LIGHTWEIGHT

The average steel chair is 50% heavier than aluminum.

- Save big on freight costs.
- Save big on installation labor costs.



LOWER OPERATING COSTS

When your crew has to move 500 banquet chairs, which is easier and faster?

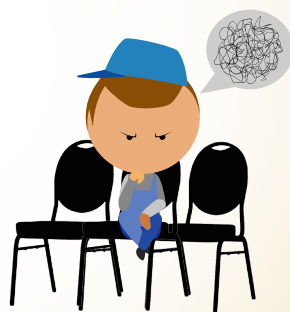
Move 7,500 pounds of aluminum.

A stack of **10 aluminum chairs** weighs **150 pounds**. That's **lighter** than the average American man.



Move 11,000 pounds of steel.

A stack of **10 steel chairs** weighs **220 pounds**. That's **heavier** than the average American man.



- Less fatigue and less risk of worker's compensation claims
- Faster set-up and tear down times.
- Significantly lower lifecycle operation costs.
- Better ROI.

DURABLE, 100% RECYCLABLE

Aluminum frames will not rust, even when dinged. The frames are 100% recyclable.

- Perfect for locations near oceans or lakes.
- The peace of mind of **Shelby Williams lifetime warranty**.



CLEAN, ARCHITECTURAL LINES

- Extruded aluminum has clean, crisp lines compared to rolled steel.
- Delivers a smoother, cleaner finish.



BENEFITS

- ✓ Aluminium is as durable as steel.
- ✓ Easier to handle and reduces the risk of handling damage.
- ✓ Less fatigue will reduce the cost of worker's compensation claims.
- ✓ Lighter loads will help recruit better quality and more diverse workers.
- ✓ Faster set up will create better ROI.



See our Full Line of Aluminum Banquet Chairs

Visit shelbywilliams.com | 800-873-3252